



KISTENMACHER

Industrial Valves

2022/23





KISTENMACHER

INDUSTRIAL VALVES

Distributed by:



Al Zerwa Trading Co. LLC
P. O Box 64916, Umm Ramool, Dubai
United Arab Emirates
Phone: +971 (0)52 8341 787
info@alzerwatrading.ae

E.G. KISTENMACHER GMBH & CO. KG
SACHSENSTR. 5
D-20097 HAMBURG
GERMANY

Phone: +49 (0)40 23 69 85 0

Fax: +49 (0)40 23 69 85 10

E-Mail: sanitary@kistenmacher.de

www.kistenmacher.de

BRANCHES:

Dubai, UAE

Phone: +971 4 222 1849

Fax: +971 4 222 5274

dubai@kistenmacher.de

Jeddah, Saudi Arabia

Phone: +966 50 564 9970

Fax: +966 12 691 3605

jeddah@kistenmacher.de

Hong Kong, China

Phone: +852 2887 6060

Fax: +852 2887 6097

china@kistenmacher.de



PASSION FOR QUALITY SINCE 1900

In the year 1888 a young boy named Ernst G. Kistenmacher joined his father, a German merchant, visiting an international trade fair in the city of Leipzig in Germany. The vibrant mood of foreign languages spoken by foreign people doing business on the trade fair captivated the boy immediately. Especially a group of Arab merchants dressed in their traditional robes fascinated him. The young boy followed the men and watched them spreading out prayer rugs on the ground and then starting to pray. Never ever in his life he could forget the image of these proud merchants interrupting their business to bow down in humility before God. And in that very moment he knew that one day he would visit their homeland to learn more about their culture, history and religion.

A few years later, the boy had become a young man in the meantime, he embarked on a nearly one year lasting business journey to the Middle East

and India which was the groundbreaking of his company E.G. Kistenmacher GmbH & Co. KG.

Ever since then we are following the same path which the company took in its founding years: Our main focus always lies on the requirements of our customers and the best possible quality of our products!

Thanks to this philosophy we can look back on a history of more than one hundred successful years. And our today's customers in the Arab world as well as our suppliers in Germany rely on our partnership for several generations in the meantime.

We would be glad if we could count you to that circle of satisfied customers, too.

Faithfully yours,

E.G. Kistenmacher GmbH & Co. KG

Picture taken by former Kistenmacher Sales Manager
Mr. Siegfried Tochtermann, Kuwait City 1959

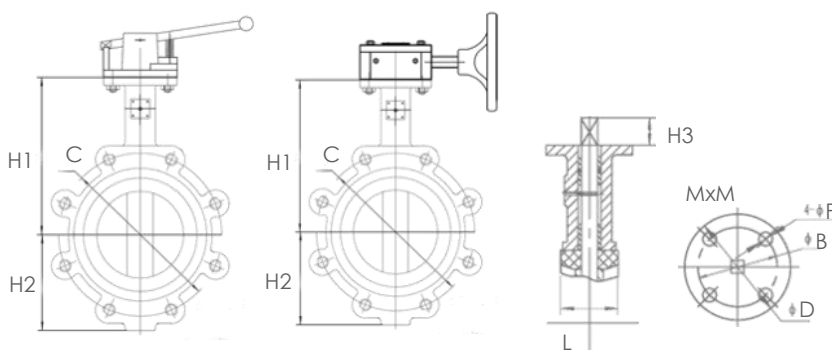


VE 200

Lug Type Butterfly Valves

Lug Type Butterfly Valves are made of ductile iron and a selection of high-grade materials for highest demands.

Design standard: API 609
 Flange standards: ANSI B16.1
 Pressure classes: ANSI CL 150



Material Specification	
Component	Material
Body	Ductile Iron
Disc	CF8M
Seat	Neoprene
Stem	Stainless Steel
Bushing	PTFE
O-Ring	EPDM
Screws	WCB

Size	Nominal max. working pressure	Tested pressure	
		Body	Seat
2-12"	200 PSI / 120°C	348 PSI	255 PSI
14"-16"	200 PSI / 120°C	217 PSI	159 PSI

Art.-No.	Size	Fla.	Dimensions (in mm)					No. / Size of Lug Bolts	Un- / Seating Torque	Dimensions (in mm)				Drive	Weight (kg)
			H1	H2	H3	C	L			D	B	F	M		
EGK VE200-2 DN 50 L	2"	ANSI 150 (B16.1)	162	76	30	120,5	45	4 x 5/8"-11 UNC	15 lb / ft	70	50	7	9	Lever	4,9
EGK VE200-2 DN 65 L	2,5"		175	80	30	139,5	48	4 x 5/8"-11 UNC	21 lb / ft	70	50	7	9	Lever	5,2
EGK VE200-2 DN 80 L	3"		181	95	30	152,5	49	4 x 5/8"-11 UNC	28 lb / ft	70	50	7	9	Lever	5,5
EGK VE200-2 DN 100 L	4"		200	114	30	190,5	55	8 x 5/8"-11 UNC	52 lb / ft	90	70	9	11	Lever	8,6
EGK VE200-2 DN 125 L	5"		213	127	30	216,0	58	8 x 3/4"-10 UNC	85 lb / ft	90	70	9	14	Lever	12,8
EGK VE200-2 DN 150 L	6"		225	140	30	241,5	59	8 x 3/4"-10 UNC	126 lb / ft	90	70	9	14	Lever	13,1
EGK VE200-2 DN 200 L	8"		260	173	36	298,5	64	8 x 3/4"-10 UNC	243 lb / ft	115	89/70	13/9	17	Lever	19,5
EGK VE200-2 DN 200 G	8"		260	173	36	298,5	64	8 x 3/4"-10 UNC	243 lb / ft	115	89/70	13/9	17	Gear	30,5
EGK VE200-2 DN 250 G	10"		292	203	36	362,0	70	12 x 7/8" - 9 UNC	403 lb / ft	125	102	11	22	Gear	40,7
EGK VE200-2 DN 300 G	12"		337	237	36	432,0	80	12 x 7/8" - 9 UNC	587 lb / ft	125	102	11	22	Gear	58,2
EGK VE200-2 DN 350 G	14"		368	280	45	476,0	79,5	12 x 1" - 8 UNC	605 lb / ft	150	125	13	22	Gear	81,3
EGK VE200-2 DN 400 G	16"		400	304	51	539,5	90	16 x 1" - 8 UNC	1032 lb / ft	210	165	22	27	Gear	129,2

Note: Seating / unseating torque indications do not include safety factor



KISTENMACHER

VE 201

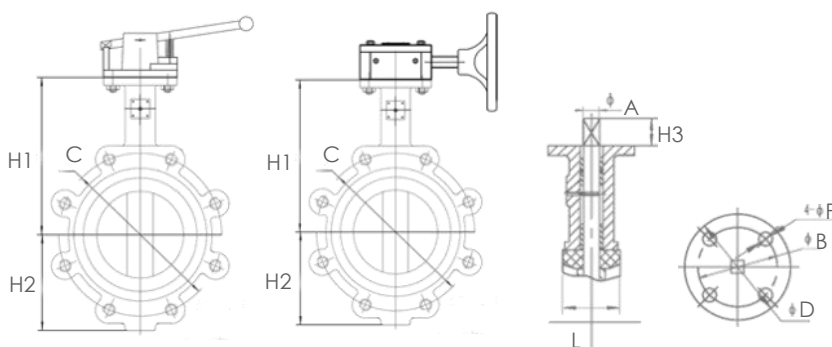
Lug Type Butterfly Valves

Lug Type Butterfly Valves are made of ductile iron and a selection of high-grade materials for highest demands.

Design standard: API 609
 Flange standards: DIN PN16
 Pressure classes: PN 16



Material Specification	
Component	Material
Body	Ductile Iron
Disc	CF8M
Seat	Neoprene
Stem	Stainless Steel
Bushing	PTFE
O-Ring	EPDM
Screws	WCB



	Nominal max. working pressure	Tested pressure	
		Body	Seat
DN50-300	1,6 MPa / 120°C	2,4 MPa	1,76 MPa
DN350-400	1,6 MPa / 120°C	1,5 MPa	1,1 MPa

Art.-No.	Size	Fla.	Dimensions (in mm)					No. / Size of Lug Bolts	Un- / Seating Torque	Dimensions (in mm)				Drive	Weight (kg)
			H1	H2	H3	C	L			D	B	F	M		
EGK VE201-2 DN 50 L	DN50	DN	162	76	30	125	45	4 x M16	21 Nm	70	50	7	9	Lever	4,9
EGK VE201-2 DN 65 L	DN65		175	80	30	145	48	4 x M16	29 Nm	70	50	7	9	Lever	5,2
EGK VE201-2 DN 80 L	DN80		181	95	30	160	49	8 x M16	39 Nm	70	50	7	9	Lever	5,5
EGK VE201-2 DN 100 L	DN100		200	114	30	180	55	8 x M16	71 Nm	90	70	9	11	Lever	8,6
EGK VE201-2 DN 125 L	DN125		213	127	30	210	58	8 x M16	115 Nm	90	70	9	14	Lever	12,8
EGK VE201-2 DN 150 L	DN150		225	140	30	240	59	8 x M20	171 Nm	90	70	9	14	Lever	13,1
EGK VE201-2 DN 200 L	DN200		260	173	36	295	64	12 x M20	330 Nm	115	89/70	13/9	17	Lever	19,5
EGK VE201-2 DN 200 G	DN200		260	173	36	295	64	12 x M20	330 Nm	115	89/70	13/9	17	Gear	30,5
EGK VE201-2 DN 250 G	DN250		292	203	36	355	70	12 x M24	547 Nm	125	102	11	22	Gear	40,7
EGK VE201-2 DN 300 G	DN300		337	237	36	410	80	12 x M24	796 Nm	125	102	11	22	Gear	58,2
EGK VE201-2 DN 350 G	DN350		368	279	45	470	79.5	16 x M24	820 Nm	150	125	13	22	Gear	81,3
EGK VE201-2 DN 400 G	DN400		400	304	51	525	90	16 x M27	1400 Nm	210	165	22	27	Gear	129,2

Note: Seating / unseating torque indications do not include safety factor



KISTENMACHER

VE 204

Wafer Type Butterfly Valves

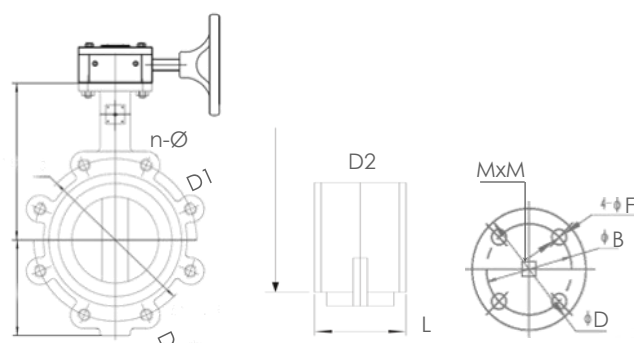
Wafer Type Butterfly Valves are made of WCB and a selection of high-grade materials for highest demands.

Design standard: API 609
 Flange standards: ANSI B16.1
 Pressure classes: ANSI CL 150

Material Specification	
Component	Material
Body	WCB
Disc	WCB+PTFE
Seat	PTFE
Stem	Stainless Steel
Bushing	PTFE
O-Ring	Viton
Screws	WCB



	Nominal max. working pressure	Tested pressure	
		Body	Seat
6-12"	200 PSI / 120°C	348 PSI	255 PSI
14"-16"	200 PSI / 120°C	217 PSI	159 PSI



Art.-No.	Size	Fla.	Dimensions (in mm)					Un- / Seating Torque	Dimensions (in mm)				Drive
			D	D1	D2	L	n-Ø		D	B	F	M	
EGK VE204-2 DN150 G	6"	ANSI B16.1	285	240	210	56,00	8-23	126 lb / ft	90	70	9	14	Gear
EGK VE204-2 DN200 G	8"		340	295	265	60,00	8-23	243 lb / ft	115	89/70	13/19	17	Gear
EGK VE204-2 DN250 G	10"		395	350	320	68,00	12-23	403 lb / ft	125	102	11	22	Gear
EGK VE204-2 DN300 G	12"		445	400	368	78,00	12-23	587 lb / ft	125	102	11	22	Gear
EGK VE204-2 DN350 G	14"		505	460	428	78,00	16-23	605 lb / ft	150	125	13	22	Gear
EGK VE204-2 DN400 G	16"		565	515	482	102,00	16-26	1032 lb / ft	210	165	22	27	Gear

Note: Seating / unseating torque indications do not include safety factor



KISTENMACHER

VE 206

U-Type Multi Flange (undrilled) Butterfly Valves

U-Type Multi Flange Butterfly Valves are made of ductile iron and a selection of high-grade materials for highest demands. The VE206 can accommodate European, American as well as Japanese flange standards in one multi flange (U-type) butterfly valve.

Design standard: API 609

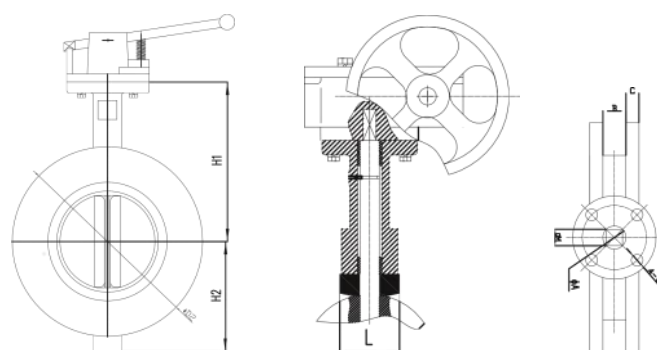
Flange standards: ready for ANSI B16.1 / DIN PN16 / JIS10K

Pressure classes: ANSI CL 125/150 / DIN PN10/16 / JIS10K



Material Specification	
Component	Material
Body	Ductile Iron
Disc	CF8M
Seat	Neoprene
Stem	Stainless Steel
Bushing	PTFE
O-Ring	EPDM
Screws	WCB

	Nominal max. working pressure	Tested pressure	
		Body	Seat
2-12"	200 PSI / 120°C	348 PSI	255 PSI
14"-16"	200 PSI / 120°C	217 PSI	159 PSI



Art.-No.	Size	Dimensions (in mm)									Un- / Seating Torque (kg)	
		L	H1	H2	D2	C	B	M	A	4-Ød		
EGK VE206-2 DN50 L	2" / DN50	45	162	85	165	10,00	22,00	9	12,70	7	20 Nm	5,2
EGK VE206-2 DN65 L	2,5" / DN65	48	178	93	185	12,50	19,00	9	12,70	7	28 Nm	6,7
EGK VE206-2 DN80 L	3" / DN80	49	185	103	200	13,00	19,00	9	12,70	7	38 Nm	7,3
EGK VE206-2 DN100 L	4" / DN100	55	191	114	229	11,70	26,50	11	15,80	9	71 Nm	9,6
EGK VE206-2 DN125 L	5" / DN125	58	208	125	254	14,30	25,50	14	19,05	9	115 Nm	12,0
EGK VE206-2 DN150 L	6" / DN150	59	227	144	285	17,30	20,00	14	19,05	9	170 Nm	15,5
EGK VE206-2 DN200 L	8" / DN200	64	257	175	346	18,00	21,00	17	22,20	13/9	330 Nm	25,6
EGK VE206-2 DN200 G	8" / DN200	64	257	175	346	18,00	28,00	17	22,20	13/9	330 Nm	25,6
EGK VE206-2 DN250 G	10" / DN250	70	297	199	406	18,00	28,00	22	28,60	11	547 Nm	35,0
EGK VE206-2 DN300 G	12" / DN300	80	347	232	487	20,00	32,40	22	31,80	11	796 Nm	57,5
EGK VE206-2 DN350 G	14" / DN350	79,5	370	270	533	20,00	35,00	22	31,80	13	820 Nm	80,3
EGK VE206-2 DN400 G	16" / DN400	90	410	290	597	24,00	37,70	27	33,30	22	1400 Nm	127,7

Note: Seating / unseating torque indications do not include safety factor



KISTENMACHER

VE 208

Wafer Type Multi Flange Butterfly Valves

Wafer Type Multi Flange Butterfly Valves are made of WCB and a selection of high-grade materials for highest demands. The VE208 covers European, American as well as Japanese flange standards.

Design standard: API 609

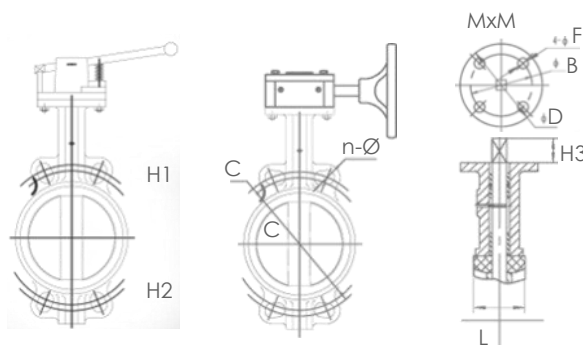
Flange standards: ANSI B16.1 / DIN PN10/PN16 / JIS10K

Pressure classes: ANSI CL 150 / DIN PN16 / JIS10K



Material Specification	
Component	Material
Body	WCB
Disc	CF8M
Seat	Neoprene
Stem	Stainless Steel
Bushing	PTFE
O-Ring	EPDM
Screws	WCB

DIN	Nominal max. working pressure	Tested pressure	
		Body	Seat
DN40-300	1,6 MPa / 120°C	2,4 MPa	1,76 MPa
DN300-350	1,6 MPa / 120°C	1,5 MPa	1,1 MPa
ANSI	1-12"	200 PSI / 120°C	348 PSI
	14-16"	200 PSI / 120°C	159 PSI



Art.-No.	Size	Dimensions (in mm)													Un- / Seating Torque (kg)	Dimensions (in mm)				
		DIN PN10			DIN PN16		ANSI B16.1		JIS 10K		H3	M	Size	D		B	F			
L	H1	H2	C	n-Ø	C	n-Ø	C	n-Ø	C	n-Ø										
EGK VE208-2 DN40 ML	1,5" / DN40	35	139	67	110	4 x 18	110	4 x 18	98,5	4 x 16	105	4 x 19	30	9	18 nm	2,4	1,5"	70	50	7
EGK VE208-2 DN50 ML	2" / DN50	45	139	75	125	4 x 18	125	4 x 18	120,5	4 x 19	120	4 x 19	30	9	21 nm	2,5	2"	70	50	7
EGK VE208-2 DN65 ML	2,5" / DN65	48	153	84	145	4 x 18	145	4 x 18	139,5	4 x 19	140	4 x 19	30	9	29 nm	3,5	2,5"	70	50	7
EGK VE208-2 DN80 ML	3" / DN80	49	160	96	160	4 x 18	160	8 x 18	152,5	4 x 19	150	8 x 19	30	9	39 nm	3,8	3"	70	50	7
EGK VE208-2 DN100 ML	4" / DN100	55	174	117	180	8 x 18	180	8 x 18	190,5	8 x 19	175	8 x 19	30	11	71 nm	5,6	4"	90	70	9
EGK VE208-2 DN125 ML	5" / DN125	58	192	129	210	8 x 18	210	8 x 18	216	8 x 22	210	8 x 23	30	14	115 nm	6,7	5"	90	70	9
EGK VE208-2 DN150 ML	6" / DN150	59	205	140	240	8 x 23	240	8 x 23	241,5	8 x 22	240	8 x 23	30	14	171 nm	8,0	6"	90	70	9
EGK VE208-2 DN200 ML	8" / DN200	64	242	176	295	8 x 23	295	12 x 23	298,5	8 x 22	290	12 x 23	36	17	330 nm	13,0	8"	115	89/70	13/9
EGK VE208-2 DN200 MG	8" / DN200	64	242	176	295	8 x 23	295	12 x 23	298,5	8 x 22	290	12 x 23	36	17	330 nm	13,0	8"	115	89/70	13/9
EGK VE208-2 DN250 MG	10" / DN250	70	272	205	350	12 x 23	355	12 x 27	362	12 x 25	355	12 x 25	36	22	547 nm	18,0	10"	125	102	11
EGK VE208-2 DN300 MG	12" / DN300	80	308	242	400	12 x 23	410	12 x 27	432	12 x 25	400	16 x 25	36	22	796 nm	28,0	12"	125	102	11
EGK VE208-2 DN350 MG	14" / DN350	79,5	373	273	460	16 x 23	470	16 x 27	476	12 x 29	445	16 x 27	45	22	820 nm	39,4	14"	150	125	13
EGK VE208-2 DN400 MG	16" / DN400	90	411	305	515	16 x 27	525	16 x 30	539,5	16 x 29	510	16 x 27	51	27	1400 nm	61,5	16"	210	165	22

Note: Seating / unseating torque indications do not include safety factor



KISTENMACHER

VE 210/211

Dual Plate Wafer Type Check Valves

Dual Plate Wafer Type Check Valves are made of Ductile iron and a selection of high-grade materials for highest demands.

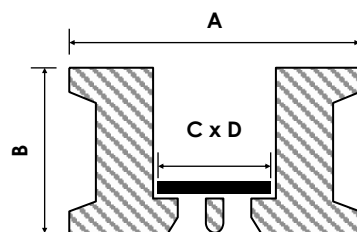
The range comprises ANSI B16.1 (VE210) and PN/DIN versions (VE211).
Maximum pressure is ANSI CL 150 resp. DIN PN16.



Material Specification	
Component	Material
Body	Ductile Iron
Disc	CF8M
Seat	Neoprene
Stem	SS410
Gasket	PTFE
Spring	SS304
Screw	Q235-A

	Nominal max. working pressure	Tested pressure	
		Body	Seat
PN16	1,6 MPa / 120°C	2,4 MPa	1,8 MPa
ANSI	200 PSI / 120°C	348 PSI	255 PSI

Art.-No.	Size	Flange	Dimensions (in mm)				Weight (kg)	
			A	B	C	D		
EGK VE210 DN50	2"	ANSI 150 (B16.1)	100	54	50	5,5	1,8	
EGK VE210 DN65	2,5"		120	54	70	5,8	3,2	
EGK VE210 DN80	3"		133	57	84	6,4	4,1	
EGK VE210 DN100	4"		171	64	100	8,0	5,4	
EGK VE210 DN125	5"		194	70	134	9,0	7,6	
EGK VE210 DN150	6"		219	76	144	9,8	9,0	
EGK VE210 DN200	8"		276	95	205	12,0	18	
EGK VE210 DN250	10"		337	108	250	14,7	29	
EGK VE210 DN300	12"		407	143	292	16,5	50	
EGK VE210 DN350	14"		447	184	342	19,0	83	
EGK VE210 DN400	16"		510	191	390	22,0	126	
EGK VE210 DN450	18"		546	203	430	26,0	160	
EGK VE210 DN500	20"		603	213	476	26,0	290	
EGK VE210 DN600	24"		714	222	584	26,0	420	
EGK VE211 DN50	DN50		PN 16	107	43	50	5,5	1,8
EGK VE211 DN65	DN65			127	46	70	5,8	3,2
EGK VE211 DN80	DN80	142		64	84	6,4	4,1	
EGK VE211 DN100	DN100	162		64	100	8,0	5,4	
EGK VE211 DN125	DN125	192		70	134	9,0	7,6	
EGK VE211 DN150	DN150	218		76	144	9,8	9,0	
EGK VE211 DN200	DN200	273		89	205	12,0	18	
EGK VE211 DN250	DN250	328		114	250	14,7	29	
EGK VE211 DN300	DN300	378		114	292	16,5	50	
EGK VE211 DN350	DN350	438		127	342	19,0	83	
EGK VE211 DN400	DN400	489		140	390	22,0	126	
EGK VE211 DN450	DN450	539		152	430	26,0	160	
EGK VE211 DN500	DN500	594		152	476	26,0	290	
EGK VE211 DN600	DN600	697		178	584	26,0	420	



KISTENMACHER

VE 222

Single Plate Wafer Type Check Valves

Single Plate Wafer Type Check Valves are made of a selection of high-grade materials for highest demands.

This multi flange valve covers ANSI B16.1 as well as PN/DIN applications.

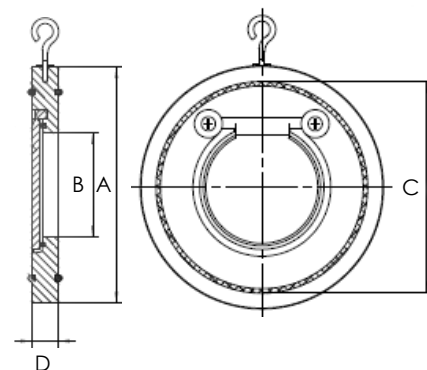
Maximum pressure is ANSI CL 150 resp. DIN PN16.

Material Specification	
Component	Material
Body	AISI316
Disc	AISI316
O-Ring	Viton (FKM)
Eye Bolt	AISI316
Hinge bolt	AISI316

	Nominal max. working pressure	Tested pressure	
		Body	Seat
PN16	1,6 MPa / 120°C	2,4 MPa	1,8 MPa
ANSI	200 PSI / 120°C	348 PSI	255 PSI



Art.-No.	Size	Flange	Dimensions (in mm)				Weight (kg)
			A	B	C	D	
EGK VE222 DN32	DN32 / 1-1/4"	Multi	76	20	59	12	0,42
EGK VE222 DN40	DN40 / 1-1/2"		85	25	68	12	0,52
EGK VE222 DN50	DN50 / 2"		105	32	84	14	0,79
EGK VE222 DN65	DN65 / 2-1/2"		124	40	96	14	1,10
EGK VE222 DN80	DN80 / 3"		136	54	117,5	14	1,30
EGK VE222 DN100	DN100 / 4"		164	70	148	18	2,26
EGK VE222 DN125	DN125 / 5"		194	92	166	18	3,15
EGK VE222 DN150	DN150 / 6"		220	114	197	20	4,54
EGK VE222 DN200	DN200 / 8"		275	154	249	22	7,65
EGK VE222 DN250	DN250 / 10"		330	200	310	26	12,63
EGK VE222 DN300	DN300 / 12"		384	230	358	30	19,95



KISTENMACHER

VE 250

Gate Valves

Gate Valves are made of WCB and a selection of high-grade materials for highest demands.

The VE250 is a ANSI API600 (Trim 1) standard gate valve in a rising stem design (OS&Y).

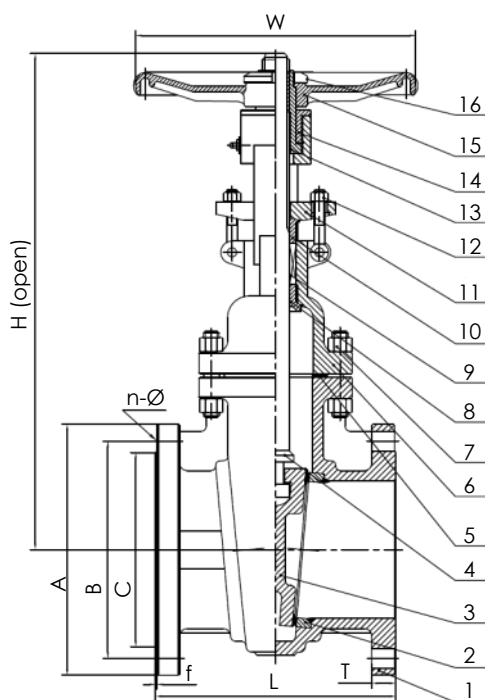
Flange dimensions: ANSI B16.5

Face-to-face dimensions: ANSI B16.10

Pressure classes: ANSI CL 150

Material Specification

No.	Component	Material
1	Body	WCB
2	Seat Ring	A105 (13 Cr face)
3	Wedge	WCB (13 Cr face)
4	Stem	ASTM A182 F6a (13Cr)
5	Gasket	SS304 + Graphite
6	Bonnet	WCB
7	Stud / Nut	B7 / 2H
8	Back Seat	13 Cr
9	Gland Packing	Graphite
10	Gland	13 Cr
11	Gland Flange	WCB
12	Stud / Nut	B7 / 2H
13	Yoke Sleeve	QT400
14	Nut	A194-2H
15	Hand Wheel	Cast Iron (A197)
16	Washer	A3



Performance Specifications

Tested pressure

Hydrostatic body test:	435 PSI
Hydrostatic seat test:	319 PSI
Air sealing test:	87 PSI
Working temperature:	-29°C - 425°C

Art.-No.	Size (NPS)	A	B	C	T	f	L	H	W	No. / Size of Lug Bolts	Weight (kg)
EGK VE250 DN50	2"	152	120,5	92	16,0	1,6	178	403	200	4 x Ø 19mm	17,5
EGK VE250 DN65	2,5"	178	139,5	105	17,5	1,6	190	434	200	4 x Ø 19mm	27,0
EGK VE250 DN80	3"	190	152,5	127	19,0	1,6	203	485	250	4 x Ø 19mm	31,0
EGK VE250 DN100	4"	229	190,5	157	24,0	1,6	229	587	250	4 x Ø 19mm	45,0
EGK VE250 DN125	5"	254	216,0	186	24,0	1,6	254	673	280	4 x Ø 19mm	60,0
EGK VE250 DN150	6"	279	241,5	216	26,0	1,6	267	767	280	4 x Ø 19mm	72,0
EGK VE250 DN200	8"	343	298,5	270	29,0	1,6	292	955	350	4 x Ø 19mm	114
EGK VE250 DN250	10"	406	362,0	324	31,0	1,6	330	1150	400	4 x Ø 19mm	174
EGK VE250 DN300	12"	483	432,0	381	32,0	1,6	356	1388	450	4 x Ø 19mm	257



KISTENMACHER

VE 401

Bellow Seal Globe Valve

Globe valves feature double bellows for maximum dependability. Special versions with different material configurations and other flange types are available on request.

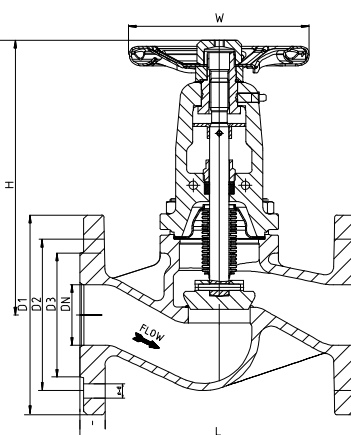
Design standard: DIN EN 13709:2003
 Flange standard: DIN EN 1092-1:2002
 Face-to-face standard: DIN EN 558-1:1995

Material Specification	
Component	Material
Body	GS-C25
Disc	13Cr
Seat	13Cr
Stem	2Cr13
Gasket	Stnl. Steel / Graphite
Bellows	SS304
Bonnet	GS-C25



Size	DN15 - 50	DN65 - 300
Rated Pressure (class PN16)		
-29 - 38°C	39,0 bar	16,1 bar
max.	21,0 bar @ 350°C	6,9 bar @ 425°C
Tested Pressure (hydrostatic)		
Shell	176,0 bar	24,0 bar
Seat	60,0 bar	17,6 bar

Art.-No.	Size	Fla.	Dimensions (in mm)						No. / Size of Lug Bolts	Drive	Weight (kg)
			H	L	D1	D2	D3	W			
EGK VE401 DN15	DN15	PN16	196	130	95	65	45	140	4 x M14	Wheel	4,0
EGK VE401 DN20	DN20		196	150	105	75	58	140	4 x M14	Wheel	5,0
EGK VE401 DN25	DN25		205	160	115	85	68	140	4 x M14	Wheel	6,0
EGK VE401 DN32	DN32		205	180	140	100	78	140	4 x M18	Wheel	8,0
EGK VE401 DN40	DN40		222	200	150	110	88	160	4 x M18	Wheel	9,5
EGK VE401 DN50	DN50		224	230	165	125	102	180	4 x M18	Wheel	12,5
EGK VE401 DN65	DN65		240	290	185	145	122	200	8 x M18	Wheel	17,0
EGK VE401 DN80	DN80		265	310	200	160	138	220	8 x M18	Wheel	22,0
EGK VE401 DN100	DN100		350	350	220	180	158	250	8 x M18	Wheel	37,0
EGK VE401 DN125	DN125		380	400	250	210	188	280	8 x M18	Wheel	55,0
EGK VE401 DN150	DN150		410	480	285	240	212	400	8 x M22	Wheel	81,0
EGK VE401 DN200	DN200		650	600	340	295	268	550	12 x M22	Wheel	141,0
EGK VE401 DN250	DN250		780	730	405	355	320	550	12 x M26	Wheel	240,0
EGK VE401 DN300	DN300		890	850	460	410	378	600	12 x M26	Wheel	305,0



KISTENMACHER

VE 308

Plastic Wafer Type Butterfly Valves

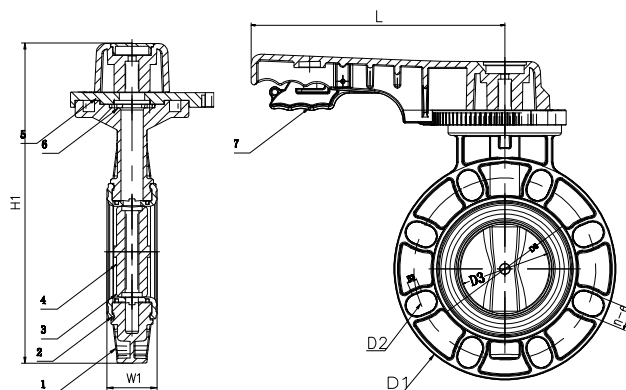
Plastic valves compliment our range of cast iron and stainless steel butterfly valves (VE 2xx) with a light-weight alternative for light industrial applications.

Flange standard: DIN PN10 / ANSI B16.1
 Pressure Classes: DIN PN10 / 150 PSI



Material Specification	
Component	Material
Body (1)	U-PVC (PVC 12454)
Seat (2)	EPDM
Disc (3)	U-PVC (PVC 12454)
Stem (4)	Carbon Steel A3
Locking Plate (5)	U-PVC (PVC 12454)
Handle (6)	U-PVC (PVC 12454)
Handle Lever (7)	U-PVC (PVC 12454)

Nominal max. working pressure	
PN16	10 bar / 60°C
ANSI	150 PSI / 60°C



Art.-No.	Size		Fla.	Dimensions (in mm)						Ø e-n	Un- / Seating Torque	Drive	Weight (kg)
	DIN	ANSI		H1	W1	L	D3	D1	D2				
EGK VE308 DN50 ML	DN50	2"	PN10 / 150 PSI	241	37	224	53	162	129	20,5 - 4	10 Nm	Lever	1,3
EGK VE308 DN65 ML	DN65	2,5"		248	43	224	65	180	145	20,5 - 4	11 Nm	Lever	1,4
EGK VE308 DN80 ML	DN80	3"		282	44	224	80	196	161	19 - 8	13 Nm	Lever	1,8
EGK VE308 DN100 ML	DN100	4"		309	49	244	105	222	189	21,5 - 8	30 Nm	Lever	2,4
EGK VE308 DN125 ML	DN125	5"		370	64	240	125	258	210	25 - 8	40 Nm	Lever	3,8
EGK VE308 DN150 ML	DN150	6"		379	69	333	154	287	247	25 - 8	54 Nm	Lever	4,0
EGK VE308 DN200 ML	DN200	8"		435	88	323	200	341	296	24 - 8	63 Nm	Lever	6,8



KISTENMACHER

VE 322

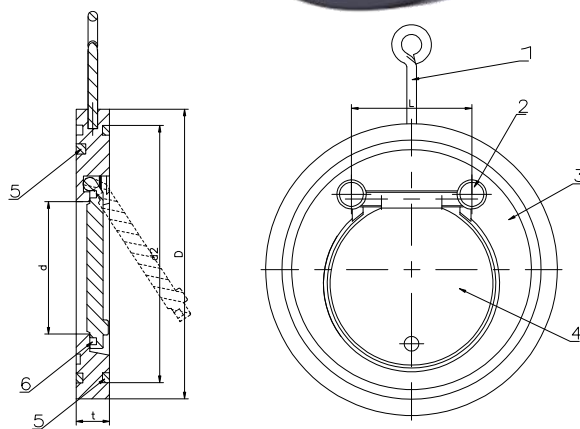
Plastic Single Plate Wafer Check Valve

Plastic single plate check valves compliment our range of stainless steel single plate check valves (VE 22x) with a light-weight alternative for light industrial applications.

Flange standard: DIN PN10 / ANSI B16.1
 Pressure Classes: DIN PN10 / 150 PSI

Material Specification	
Component	Material
Ring Bolt (1)	SS304
Hinge (2)	U-PVC (PVC 12454)
Body (3)	U-PVC (PVC 12454)
Disc (4)	U-PVC (PVC 12454)
O-Rings (5), (6)	EPDM

Nominal max. working pressure	
PN16	10 bar / 60°C
ANSI	150 PSI / 60°C



Art.-No.	Size		Flange	Dimensions (in mm)				Weight (kg)
	DIN	ANSI		D	d	d2	t	
EGK VE322 DN50	DN50	2"	PN10 / 150 PSI	108,5	30,8	87,7	19,2	0,23
EGK VE322 DN65	DN65	2,5"		130	38	100,2	19,4	0,30
EGK VE322 DN80	DN80	3"		144,4	52,8	120,5	20,8	0,43
EGK VE322 DN100	DN100	4"		163,6	70	151,6	24,0	0,57
EGK VE322 DN125	DN125	5"		193,8	88	173	22,4	0,77
EGK VE322 DN150	DN150	6"		218,9	110,6	204,2	25,3	1,09
EGK VE322 DN200	DN200	8"		282	149	263,7	34,2	2,07



KISTENMACHER

VE 381

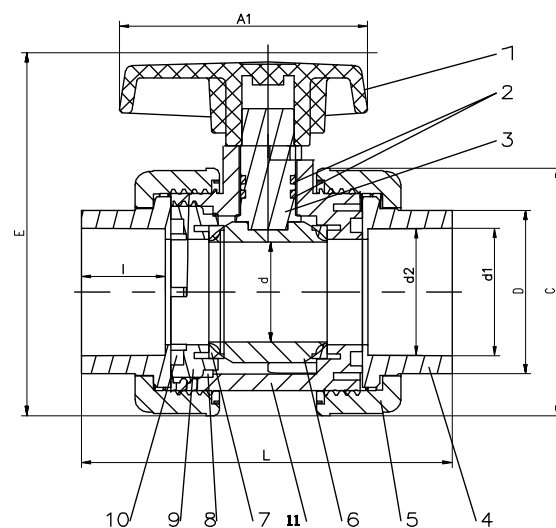
Plastic Ball Valves

Double union ball valves are the latest addition to our new range of plastic valves . Other flange standards / pressure classes can be offered on request.

Pressure Classes: DIN PN10
DIN PN16

Material Specification	
Component	Material
Handle (1)	U-PVC (PVC 12454)
Stem O-Ring (2)	EPDM, FPM (NBR)
Stem (3)	U-PVC (PVC 12454)
End Connector (4)	U-PVC (PVC 12454)
Union Nut (5)	U-PVC (PVC 12454)
Ball (6)	U-PVC (PVC 12454)
Seat Seal (7)	TPE, TPV
Carrier O-Ring (8)	EPDM, FPM (NBR)
Carrier (9)	U-PVC (PVC 12454)
Union O-Ring (10)	EPDM, FPM (NBR)
Body (11)	U-PVC (PVC 12454)

Nominal max. working pressure	
PN16	10 bar / -10 - 60°C
ANSI	150 PSI / -10 - 60°C



Art.-No.	Size DIN	Pressure	Dimensions (in mm)									Drive	Weight (kg)
			L	D	d	d1	d2	A1	E	C	I		
EGK VE381 DN15	DN15	PN16	81	28,85	15,5	20,3	20	60,2	77	54,5	16,5	Handle	0,16
EGK VE381 DN20	DN20		92	34,9	20,5	25,4	25	67,1	89	59	19,5	Handle	0,22
EGK VE381 DN25	DN25		104,8	43,2	25,3	32,3	32	74,6	103,3	68,7	22	Handle	0,32
EGK VE381 DN32	DN32		122,2	51,9	29,1	40,3	40	84,6	118	89	26,4	Handle	0,47
EGK VE381 DN40	DN40		143,2	61,9	38,7	50,3	50	94,2	138,4	93,9	31,5	Handle	0,74
EGK VE381 DN50	DN50		173,1	75,1	48,7	63,3	63	109,3	165,2	115,5	38,4	Handle	1,20
EGK VE381 DN65	DN65	PN10	209	88,4	58,4	75,3	75	125,5	193,5	138,8	41,7	Handle	2,10
EGK VE381 DN80	DN80		244,3	106	73,5	90,3	90	139	228,5	167,7	51,5	Handle	3,50
EGK VE381 DN100	DN100		285,4	130,3	97,3	110,4	110	158,7	277	210	60,7	Handle	6,00



KISTENMACHER

DLA

Electric Actuators

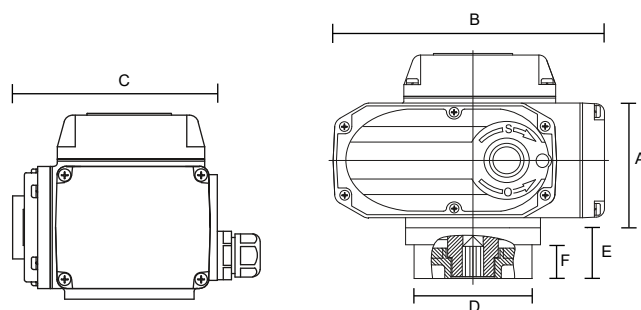
Actuators are mounted directly to the valve which eliminates the inaccuracies commonly caused by linkages. The products are suitable for the automatization of quarter turn butterfly valves and ball valves. The standard ISO5211 multi-flange mounting and double square drive provide for an easy and efficient installation. This catalogue page shows the most common models of the KISTENMACHER DLA line. Other control circuit types, time/torque combinations and 360° options are available on request.

Specifications:

Working angle:	90° (quarter turn)
Type:	On-Off (circuit B) / EPS (circuit E)
Enclosure:	Aluminum alloy, IP67 / Nema 4
Gears:	Thermally refined steel
Output drive:	ISO5211, female double square
Electrical connection:	Terminal, 1/2" NPT, cable gland
Visual position Indicator:	Shatter proof glass / yellow dial
Manual override:	Hex wrench
Motor protection:	Thermal overload
Temperature range:	-30°C - +60°C

Suitability for EGK Butterfly Valves

Type	EGK Butterfly Valve
EGK DLA 05...	EGK BV DN50 / DN65
EGK DLA 10...	EGK BV DN80 / DN100
EGK DLA 20...	EGK BV DN125 / DN150
EGK DLA 40...	EGK BV DN200
EGK DLA 60...	EGK BV DN250
EGK DLA 100...	EGK BV DN300 / DN350
EGK DLA 160...	EGK BV DN400
EGK DLA 250...	On request



Art.-No.	Torque	Voltage / Amps	Mounting	Output Drive	Dimensions (mm)						Weight
					ISO5211	A	B	C	D	E	
EGK DLA 05...	50 Nm / 20S	AC220V / 0,16A	F03 / F05 / F07	9x9 / 14x14 mm	103	160	113	70	30	17	2,0 kg
EGK DLA 10...	100 Nm / 30S	AC220V / 0,35A	F05 / F07	9x9 / 14x14 mm	126	196	121	90	32	19	3,0 kg
EGK DLA 20...	200 Nm / 30S	AC220V / 0,37A	F07 / F10	11x11 / 14x14 / 22x22 mm	148	255	158	125	48	25	8,0 kg
EGK DLA 40...	400 Nm / 30S	AC220V / 0,57A	F07 / F10	17x17 mm	148	255	158	125	48	25	8,5 kg
EGK DLA 60...	600 Nm / 45S	AC220V / 0,60A	F07 / F10	22x22 mm	148	255	158	125	48	25	9,0 kg
EGK DLA 100...	1.000 Nm / 30S	AC220V / 0,94A	F10 / F12	22x22 mm	165	310	217	135	50	30	17,0 kg
EGK DLA 160...	1.600 Nm / 48S	AC220V / 0,96A	F10 / F12	27x27 mm	165	310	217	135	50	30	18,0 kg
EGK DLA 250...	2.500 Nm / 75S	AC220V / 0,98A	F14 / F16	27x27 mm	165	310	217	135	50	30	18,0 kg



KISTENMACHER

DLA

Compact Electric Actuators

The KISTENMACHER DLA-line is a range of direct-installation compact electric actuators. By mounting directly to the valve these actuators eliminate the inaccuracies commonly caused by linkages.

The products are suitable for the automatization of quarter turn butterfly valves and ball valves. The standard ISO5211 multi-flange mounting and double square drive provide for an easy and efficient installation.

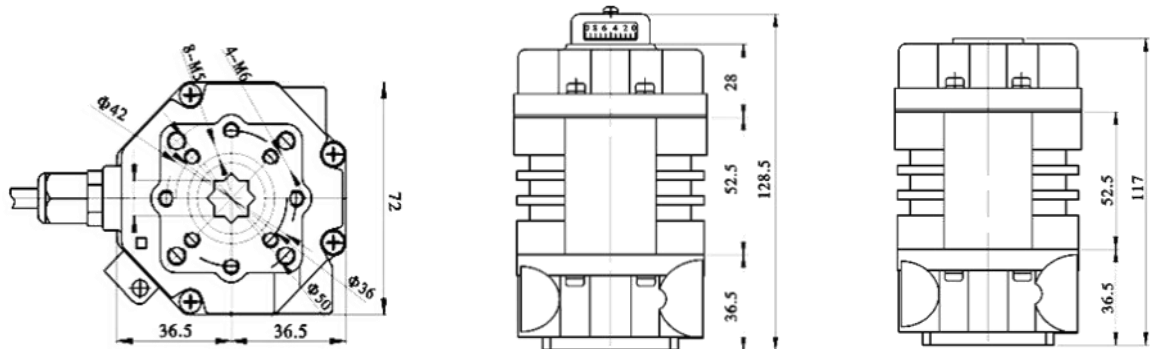
This catalogue page shows the most common models of the KISTENMACHER DLA line. Other control circuit types, time/torque combinations and 360° options are available on request.

Specifications:

Working angle:	90° (quarter turn)
Type:	On-Off (circuit B)
Enclosure:	Aluminum alloy, IP67 / Nema 4
Gears:	Thermally refined steel
Output drive:	ISO5211, female double square
Electrical connection:	35cm Power lead
Visual position Indicator:	Shatter proof glass / yellow dial
Manual override:	Hex wrench
Motor protection:	Thermal overload
Temperature range:	-30°C - +60°C

Suitability for EGK Butterfly Valves

Type	EGK Butterfly Valve
EGK DLA 02..	EGK BV DN40 / DN50



Art.-No.	Torque	Voltage / Amps	Mounting ISO5211	Output Drive	Weight
EGK DLA 02..	20 Nm / 15 S	AC220V / 0,15A	F03 / F04 / F05	9x9 / 11x11 mm	1,2 kg



KISTENMACHER

Standard Pressure Gauges

KISTENMACHER pressure gauges are used for the reliable measurement of the pressure of non-explosive liquids and gasses.

For use in temperatures between -40°C to $+70^{\circ}\text{C}$ and relative humidity of max 85%.

Packed in handy packs of 5 boxes / pieces for easy sales.

Specifications:	
Casing:	Steel (black lacquered)
Window:	Transparent acrylic mirror
Bourdon Tube:	Phospor bronze
Scale:	Dual (bar / PSI)



Diameter	63 mm	100 mm	100 mm
Connection	BSPT 1/4"	BSPT 1/4"	BSPT 1/2"
Connector location	Bottom connection	Bottom connection	Bottom connection
Scale range			
0 to 6 bar / 0 to 90 psi	EGK SH-63-6B/BSPT	EGK SH-100-6B/BSPT	EGK SH-100-6B/1/2
0 to 10 bar / 0 to 140 psi	EGK SH-63-10B/BSPT	EGK SH-100-10B/BSPT	EGK SH-100-10B/1/2
0 to 16 bar / 0 to 230 psi	EGK SH-63-16B/BSPT	EGK SH-100-16B/BSPT	EGK SH-100-16B/1/2
0 to 20 bar / 0 to 290 psi	EGK SH-63-20B/BSPT	EGK SH-100-20B/BSPT	EGK SH-100-20B/1/2
0 to 25 bar / 0 to 350 psi	EGK SH-63-25B/BSPT	EGK SH-100-25B/BSPT	EGK SH-100-25B/1/2
0 to 27 bar / 0 to 400 psi	EGK SH-63-27B/BSPT	EGK SH-100-27B/BSPT	EGK SH-100-27B/1/2
0 to 35 bar / 0 to 500 psi	EGK SH-63-35B/BSPT	EGK SH-100-35B/BSPT	EGK SH-100-35B/1/2
0 to 40 bar / 0 to 580 psi	EGK SH-63-40B/BSPT	EGK SH-100-40B/BSPT	EGK SH-100-40B/1/2
0 to 60 bar / 0 to 870 psi	EGK SH-63-60B/BSPT	EGK SH-100-60B/BSPT	EGK SH-100-60B/1/2
0 to 70 bar / 0 to 1000 psi	EGK SH-63-70B/BSPT	EGK SH-100-70B/BSPT	EGK SH-100-70B/1/2
0 to 100 bar / 0 to 1400 psi	EGK SH-63-100B/BSPT	EGK SH-100-100B/BSPT	EGK SH-100-100B/1/2
0 to 160 bar / 0 to 2300 psi	EGK SH-63-160B/BSPT	EGK SH-100-160B/BSPT	EGK SH-100-160B/1/2
0 to 210 bar / 0 to 3000 psi	EGK SH-63-210B/BSPT	EGK SH-100-210B/BSPT	EGK SH-100-210B/1/2
0 to 250 bar / 0 to 3600 psi	EGK SH-63-250B/BSPT	EGK SH-100-250B/BSPT	EGK SH-100-250B/1/2
0 to 280 bar / 0 to 4000 psi	EGK SH-63-280B/BSPT	EGK SH-100-280B/BSPT	EGK SH-100-280B/1/2
0 to 350 bar / 0 to 5000 psi	EGK SH-63-350B/BSPT	EGK SH-100-350B/BSPT	EGK SH-100-350B/1/2
0 to 400 bar / 0 to 5800 psi	EGK SH-63-400B/BSPT	EGK SH-100-400B/BSPT	EGK SH-100-400B/1/2
0 to 600 bar / 0 to 8700 psi	EGK SH-63-600B/BSPT	EGK SH-100-600B/BSPT	EGK SH-100-600B/1/2
0 to 700 bar / 0 to 10000 psi	EGK SH-63-700B/BSPT	EGK SH-100-700B/BSPT	EGK SH-100-700B/1/2
0 to 1000 bar / 0 to 14000 psi	EGK SH-63-1000B/BSPT	EGK SH-100-1000B/BSPT	EGK SH-100-1000B/1/2
-1 to 0 bar / -14 to 0 psi	EGK SH-63-V1B/BSPT	EGK SH-100-V1B/BSPT	EGK SH-100-V1B/1/2
-1 to 1 bar / -14 to 14 psi	EGK SH-63-C1B/BSPT	EGK SH-100-C1B/BSPT	EGK SH-100-C1B/1/2



KISTENMACHER

Glycerine Fillable Pressure Gauges

KISTENMACHER pressure gauges are used for the reliable measurement of the pressure of non-explosive liquids and gasses.

For use in temperatures between -40°C to $+70^{\circ}\text{C}$ and relative humidity of max 85%.

Packed in handy packs of 5 boxes / pieces for easy sales.

Specifications:	
Casing:	Steel (black lacquered)
Window:	Transparent polycarbonate
Bourdon Tube:	Phospor bronze
Scale:	Dual (bar / PSI)



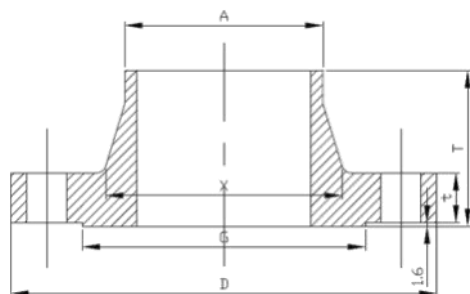
Diameter	63 mm	63 mm
Connection	NPT 1/4"	NPT 1/4"
Connector location	Bottom connection	Axial connection (back)
Scale range		
0 to 2.5 bar / 0 to 36 PSI	EGK SEF-63-2.5B/NPT	EGK SEFR-63-2.5B/NPT
0 to 4 bar / 0 to 60 PSI	EGK SEF-63-4B/NPT	EGK SEFR-63-4B/NPT
0 to 6 bar / 0 to 90 PSI	EGK SEF-63-6B/NPT	EGK SEFR-63-6B/NPT
0 to 7 bar / 0 to 100 PSI	EGK SEF-63-7B/NPT	EGK SEFR-63-7B/NPT
0 to 10 bar / 0 to 140 PSI	EGK SEF-63-10B/NPT	EGK SEFR-63-10B/NPT
0 to 11 bar / 0 to 160 PSI	EGK SEF-63-11B/NPT	EGK SEFR-63-11B/NPT
0 to 16 bar / 0 to 230 PSI	EGK SEF-63-16B/NPT	EGK SEFR-63-16B/NPT
0 to 20 bar / 0 to 290 PSI	EGK SEF-63-20B/NPT	EGK SEFR-63-20B/NPT
0 to 21 bar / 0 to 300 PSI	EGK SEF-63-21B/NPT	EGK SEFR-63-21B/NPT
0 to 25 bar / 0 to 350 PSI	EGK SEF-63-25B/NPT	EGK SEFR-63-25B/NPT
0 to 27 bar / 0 to 400 PSI	EGK SEF-63-27B/NPT	EGK SEFR-63-27B/NPT
0 to 35 bar / 0 to 500 PSI	EGK SEF-63-35B/NPT	EGK SEFR-63-35B/NPT
0 to 40 bar / 0 to 580 PSI	EGK SEF-63-40B/NPT	EGK SEFR-63-40B/NPT
0 to 60 bar / 0 to 870 PSI	EGK SEF-63-60B/NPT	EGK SEFR-63-60B/NPT
0 to 70 bar / 0 to 1000 PSI	EGK SEF-63-70B/NPT	EGK SEFR-63-70B/NPT
0 to 100 bar / 0 to 1400 PSI	EGK SEF-63-100B/NPT	EGK SEFR-63-100B/NPT
0 to 160 bar / 0 to 2300 PSI	EGK SEF-63-160B/NPT	EGK SEFR-63-160B/NPT
0 to 210 bar / 0 to 3000 PSI	EGK SEF-63-210B/NPT	EGK SEFR-63-210B/NPT
0 to 250 bar / 0 to 3600 PSI	EGK SEF-63-250//NPT	EGK SEFR-63-250B/NPT
0 to 280 bar / 0 to 4000 PSI	EGK SEF-63-280B/NPT	EGK SEFR-63-280B/NPT
0 to 350 bar / 0 to 5000 PSI	EGK SEF-63-350B/NPT	EGK SEFR-63-350B/NPT
0 to 400 bar / 0 to 5800 PSI	EGK SEF-63-400B/NPT	EGK SEFR-63-400B/NPT
0 to 600 bar / 0 to 8700 PSI	EGK SEF-63-600B/NPT	EGK SEFR-63-600B/NPT
0 to 700 bar / 0 to 10000 PSI	EGK SEF-63-700B/NPT	EGK SEFR-63-700B/NPT
0 to 1000 bar / 0 to 14000 PSI	EGK SEF-63-1000B/NPT	EGK SEFR-63-1000B/NPT
-1 to 0 bar / -14 to 0 PSI	EGK SEF-63-V1B/NPT	EGK SEFR-63-V1B/NPT
-1 to 1 bar / -14 to 14 PSI	EGK SEF-63-C1B/NPT	EGK SEFR-63-C1B/NPT



KISTENMACHER

FL100

Welding Flanges (Neck type), ANSI B16.5 150LB

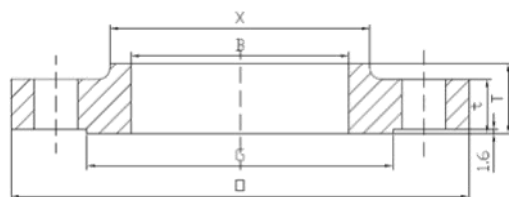


Art.-No.	Material
EGK FL210-xx	Stainless Steel
EGK FL220-xx	Carbon Steel

Art.-No.	EGK FL1xx-... (measurements in mm)																		
	...-00	...-01	...-02	...-03	...-04	...-05	...-06	...-07	...-08	...-09	...-10	...-11	...-12	...-13	...-14	...-15	...-16	...-17	...-18
Size	1/2"	3/4"	1"	1-1/4"	1-1/2"	2"	2-1/2"	3"	4"	5"	6"	8"	10"	12"	14"	16"	18"	20"	24"
D	89,0	99,0	108,0	117,0	127,0	152,0	178,0	191,0	229,0	254,0	279,0	343,0	406,0	483,0	533,0	597,0	635,0	699,0	812,8
i	11,2	12,7	14,2	15,7	17,5	19,1	22,4	23,9	23,9	23,9	25,4	28,4	30,2	31,8	35,1	36,6	39,6	42,9	47,8
G	35,1	42,9	50,8	63,5	73,2	91,9	104,6	127,0	157,2	185,7	215,9	269,7	323,9	381,0	412,8	469,9	533,4	584,2	692,2
X	30,2	38,1	49,3	58,7	65,0	77,7	90,4	108,0	134,9	163,6	192,0	246,1	304,8	365,3	400,1	457,2	505,0	558,8	663,4
T	47,8	53,3	55,6	57,2	62,0	63,5	69,9	69,9	76,2	88,9	88,9	101,6	101,6	114,3	127,0	127,0	139,7	144,5	152,4
A	21,3	26,7	33,5	42,2	48,3	60,5	73,2	88,9	114,3	141,2	168,4	219,2	273,1	323,9	355,6	406,4	457,2	508,0	609,6

FL200

Slip-On Flanges, ANSI B16.5 150LB



Art.-No.	Material
EGK FL210-xx	Stainless Steel
EGK FL220-xx	Carbon Steel

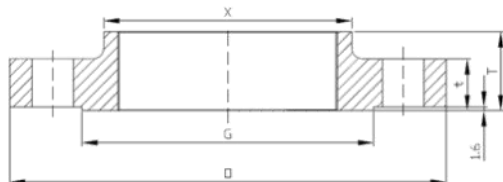
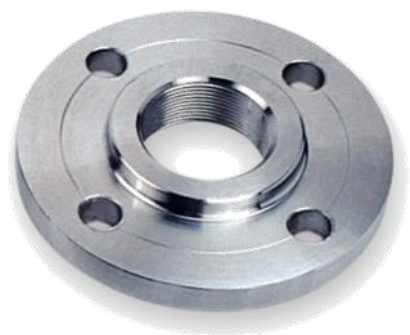
Art.-No.	EGK FL2xx-... (measurements in mm)																		
	...-00	...-01	...-02	...-03	...-04	...-05	...-06	...-07	...-08	...-09	...-10	...-11	...-12	...-13	...-14	...-15	...-16	...-17	...-18
Size	1/2"	3/4"	1"	1-1/4"	1-1/2"	2"	2-1/2"	3"	4"	5"	6"	8"	10"	12"	14"	16"	18"	20"	24"
O	89,0	99,0	108,0	117,0	127,0	152,0	178,0	191,0	229,0	254,0	279,0	343,0	406,0	483,0	533,0	597,0	635,0	699,0	821,8
i	11,2	12,7	14,2	15,7	17,5	19,1	22,4	23,9	23,9	23,9	25,4	28,4	30,2	31,8	35,1	36,6	39,6	42,9	47,8
G	35,1	42,9	50,8	63,5	73,2	91,9	104,6	127,0	157,2	185,7	215,9	269,7	323,9	381,0	412,8	469,9	533,4	584,2	692,2
X	30,2	38,1	49,3	58,7	65,0	77,7	90,4	108,0	134,9	163,6	192,0	246,1	304,8	365,3	400,1	457,2	505,0	558,8	663,4
T	15,7	15,7	17,5	20,6	22,4	25,4	28,4	30,2	33,3	36,6	39,6	44,5	49,3	55,6	57,2	63,5	68,3	73,2	82,6
B	22,4	27,7	34,5	43,2	49,5	62,0	74,7	90,7	116,1	143,8	170,7	221,5	276,4	327,2	359,2	410,5	461,8	513,1	616,0



KISTENMACHER

FL300

Threaded Flanges, ANSI B16.5 150LB

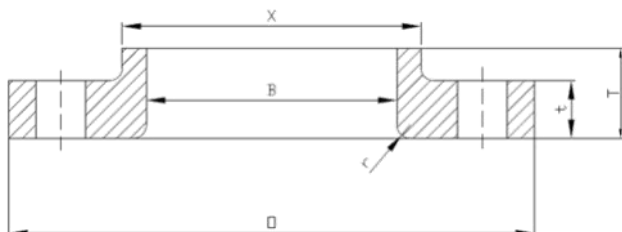


Art.-No.	Material
EGK FL310-xx	Stainless Steel
EGK FL320-xx	Carbon Steel

Art.-No.	EGK FL3xx-...																		(measurements in mm)	
	...-00	...-01	...-02	...-03	...-04	...-05	...-06	...-07	...-08	...-09	...-10	...-11	...-12	...-13	...-14	...-15	...-16	...-17	...-18	
Size	1/2"	3/4"	1"	1-1/4"	1-1/2"	2"	2-1/2"	3"	4"	5"	6"	8"	10"	12"	14"	16"	18"	20"	24"	
O	89,0	99,0	108,0	117,0	127,0	152,0	178,0	191,0	229,0	254,0	279,0	343,0	406,0	483,0	533,0	597,0	635,0	699,0	812,8	
i	11,2	12,7	14,2	15,7	17,5	19,1	22,4	23,9	23,9	23,9	25,4	28,4	30,2	31,8	35,1	36,6	39,6	42,9	47,8	
G	35,1	42,9	50,8	63,5	73,2	91,9	104,6	127,0	157,2	185,7	215,9	269,7	323,9	381,0	412,8	469,9	533,4	584,2	692,2	
X	30,2	38,1	49,3	58,7	65,0	77,7	90,4	108,0	134,0	163,6	192,0	246,1	304,8	365,3	400,1	457,2	505,0	558,8	663,4	
T	15,7	15,7	17,5	20,6	22,4	25,4	28,4	30,2	33,3	36,6	39,6	44,5	49,3	55,6	57,2	63,5	68,3	73,2	82,6	

FL400

Lap Joint Flanges, ANSI B16.5 150LB



Art.-No.	Material
EGK FL410-xx	Stainless Steel
EGK FL420-xx	Carbon Steel

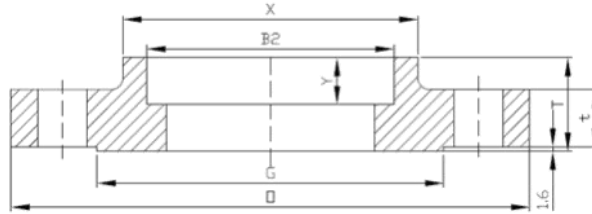
Art.-No.	EGK FL4xx-...																		(measurements in mm)	
	...-00	...-01	...-02	...-03	...-04	...-05	...-06	...-07	...-08	...-09	...-10	...-11	...-12	...-13	...-14	...-15	...-16	...-17	...-18	
Size	1/2"	3/4"	1"	1-1/4"	1-1/2"	2"	2-1/2"	3"	4"	5"	6"	8"	10"	12"	14"	16"	18"	20"	24"	
O	89,0	99,0	108,0	117,0	127,0	152,0	178,0	191,0	229,0	254,0	279,0	343,0	406,0	483,0	533,0	597,0	635,0	699,0	812,9	
X	30,2	38,1	49,2	58,7	65,1	77,8	90,5	108,0	134,9	163,5	188,9	246,0	304,8	365,1	400,0	457,2	504,8	558,8	663,6	
T	11,2	12,7	14,2	15,7	17,5	19,1	22,4	23,9	23,9	23,9	25,4	28,4	30,2	31,8	35,1	36,6	39,6	42,9	47,8	
B	22,9	28,2	35,1	43,7	50,0	62,5	75,4	91,4	116,8	144,5	171,5	222,3	277,4	328,2	360,2	411,2	462,3	514,4	616,0	
i	3,0	3,0	3,0	4,8	6,4	7,9	7,9	9,7	11,2	11,2	12,7	12,7	12,7	12,7	12,7	12,7	12,7	12,7	12,7	



KISTENMACHER

FL500

Welding Flanges (Socket Type), ANSI B16.5 150LB

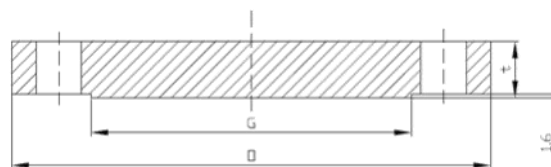


Art.-No.	Material
EGK FL510-xx	Stainless Steel
EGK FL520-xx	Carbon Steel

Art.-No.	EGK FL5xx-...																		(measurements in mm)	
	...-00	...-01	...-02	...-03	...-04	...-05	...-06	...-07	...-08	...-09	...-10	...-11	...-12	...-13	...-14	...-15	...-16	...-17	...-18	
Size	1/2"	3/4"	1"	1-1/4"	1-1/2"	2"	2-1/2"	3"	4"	5"	6"	8"	10"	12"	14"	16"	18"	20"	24"	
O	89,0	99,0	108,0	117,0	127,0	152,0	178,0	191,0	229,0	254,0	279,0	343,0	406,0	483,0	533,0	597,0	635,0	699,0	812,8	
G	35,1	42,9	50,8	63,5	73,2	91,9	104,6	127,0	157,2	185,7	215,9	269,7	323,9	381,0	412,8	469,9	533,4	584,2	692,2	
t	11,2	12,7	14,2	15,7	17,5	19,1	22,4	23,9	23,9	23,9	25,4	28,4	30,2	31,8	35,1	36,6	39,6	42,9	47,8	
X	30,2	38,1	49,3	58,7	65,0	77,7	90,4	108,0	134,9	163,6	192,0	246,1	304,8	365,3	400,1	457,2	505,0	558,8	663,4	
Y	9,7	11,2	12,7	14,2	15,7	17,5	19,1	20,6	23,9	23,9	26,9	31,8	33,3	39,6	41,4	44,5	49,3	54,1	63,5	
B2	22,4	27,7	34,5	43,2	49,5	62,0	74,7	90,7	116,1	143,8	170,7	221,5	276,4	327,2	359,2	410,5	461,8	513,2	616,0	
T	15,7	15,7	17,5	20,6	22,4	25,4	28,4	30,2	33,3	36,6	39,6	44,5	49,3	55,6	57,2	63,5	68,3	73,2	82,6	

FL600

Blind Flanges, ANSI B16.5 150LB



Art.-No.	Material
EGK FL610-xx	Stainless Steel
EGK FL620-xx	Carbon Steel

Art.-No.	EGK FL6xx-...																		(measurements in mm)	
	...-00	...-01	...-02	...-03	...-04	...-05	...-06	...-07	...-08	...-09	...-10	...-11	...-12	...-13	...-14	...-15	...-16	...-17	...-18	
Size	1/2"	3/4"	1"	1-1/4"	1-1/2"	2"	2-1/2"	3"	4"	5"	6"	8"	10"	12"	14"	16"	18"	20"	24"	
O	89,0	99,0	108,0	117,0	127,0	152,0	178,0	191,0	229,0	254,0	279,0	343,0	406,0	483,0	533,0	597,0	635,0	699,0	812,8	
G	35,1	42,9	50,8	63,5	73,2	91,9	104,6	127,0	157,2	185,7	215,9	269,7	323,9	381,0	412,8	469,9	533,4	584,2	692,2	
T	11,2	12,7	14,2	15,7	17,5	19,1	22,4	23,9	23,9	23,9	25,4	28,4	32,2	31,8	35,1	36,6	39,6	42,9	47,8	



KISTENMACHER

Chrome plated brass bore ball valve

PN25

Material: HPB57-3



Type 100	
Item code	Size
800001.012	1/2"
800001.034	3/4"
800001.100	1"
800001.114	1 1/4"
800001.112	1 1/2"
800001.200	2"
800001.212	2 1/2"
800001.300	3"
800001.400	4"

Forged brass full way gate valve

Water and Oil

Pressure: 17,5 bar (Type 800003) / 20 bar (Type 800004)

Material: HPB57-3

Type 800003	
Item code	Size
800003.012	1/2"
800003.034	3/4"
800003.100	1"
800003.114	1 1/4"
800003.112	1 1/2"
800003.200	2"

Type 800004	
Item code	Size
800004.012	1/2"
800004.034	3/4"
800004.100	1"
800004.114	1 1/4"
800004.112	1 1/2"
800004.200	2"



Type 800003



Type 800004



KISTENMACHER



KISTENMACHER



SANITARY



LIGHTING



TOOLS



ELECTRICAL



**INDUSTRIAL
VALVES**

E.G. KISTENMACHER GMBH & CO. KG

**SACHSENSTR. 5
D-20097 HAMBURG
GERMANY**

phone: +49 (0)40 23 69 85 0

fax: +49 (0)40 23 69 85 10

e-mail: sanitary@kistenmacher.de

www.kistenmacher.de